

WELCOME

to

Sir G



About Us

■ Sir G is a forward-thinking, product-based company committed to delivering value-driven products and life-changing opportunities.

Founded with a vision to empower every household through quality wellness, personal care, and lifestyle solutions, Sir G blends innovation with integrity to create a powerful business platform.

■ Our network marketing model allows everyday individuals to become entrepreneurs — building their own business, achieving financial independence, and inspiring others along the way.

With a strong focus on product effectiveness, customer satisfaction, and leadership development, Sir G is not just a company — it's a movement towards success, self-reliance, and social impact.

Mission & Vision

Our mission is to empower individuals and families through high-quality, result-driven products and a rewarding business opportunity.

We are committed to building a transparent and ethical multi-level marketing ecosystem where people from all walks of life can grow, lead, and succeed.

Our vision is to become one of India's most trusted and innovative product-based companies, delivering sustainable value to customers and distributors alike.

We envision a future where every individual has access to premium products and the chance to transform their lives through entrepreneurship.

Our Packages

JOIN US



Silver

25000/-



Gold

50000/-



Diamond

100000/-



Platinum

250000/-

Types Of Income



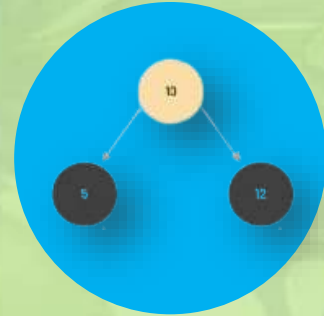
Retail Profit
(10% to 25%)



Referral
Income (5%)



Profit Sharing
Income



Matching
Income(6%)



Life Time
Rewards



Repurchase
Income



Team
Development Fund



Car Fund



Travel Fund



House Fund



Royalty

Cash Back Income



Silver

2500/-

**PSI 150x25MONTH
MP 2.5**

DAILY CAPPING 2500/-

TOTAL CAPPING 5X OF YOUR PACKAGE



Gold

5000/-

**PSI 330x25MONTH
MP 5**

DAILY CAPPING 5000/-

TOTAL CAPPING 5X OF YOUR PACKAGE



Diamond

10000/-

**PSI 660 x 25 MONTH
MP10**

DAILY CAPPING 10000/-

TOTAL CAPPING 5X OF YOUR PACKAGE



Platinum

25000/-

**PSI 1800 x 25 MONTH
MP25**

DAILY CAPPING 15000/-

TOTAL CAPPING 5X OF YOUR PACKAGE

Referral Income

**“Earn 5% Commission
On Every Referral ”**



Matching Income

“Get 6% Commission on Every Binary Match”



Note : All Binary Matching pair 1 : 1. & Power Leg is Carry Forward.

Life Time Reward

Matching	Reward
150 MP	LDP
700 MP	Tablet
2500 MP	Bike / 51000/-
10000 MP	Car Finance / 2 Lac Rs
50000 MP	Scorpio / 15 Lac Rs
3 Lac MP	Mercedes / 60 Lac Rs
10 Lac MP	2 Cr. + 1 Lac/- life time

Retail Profit

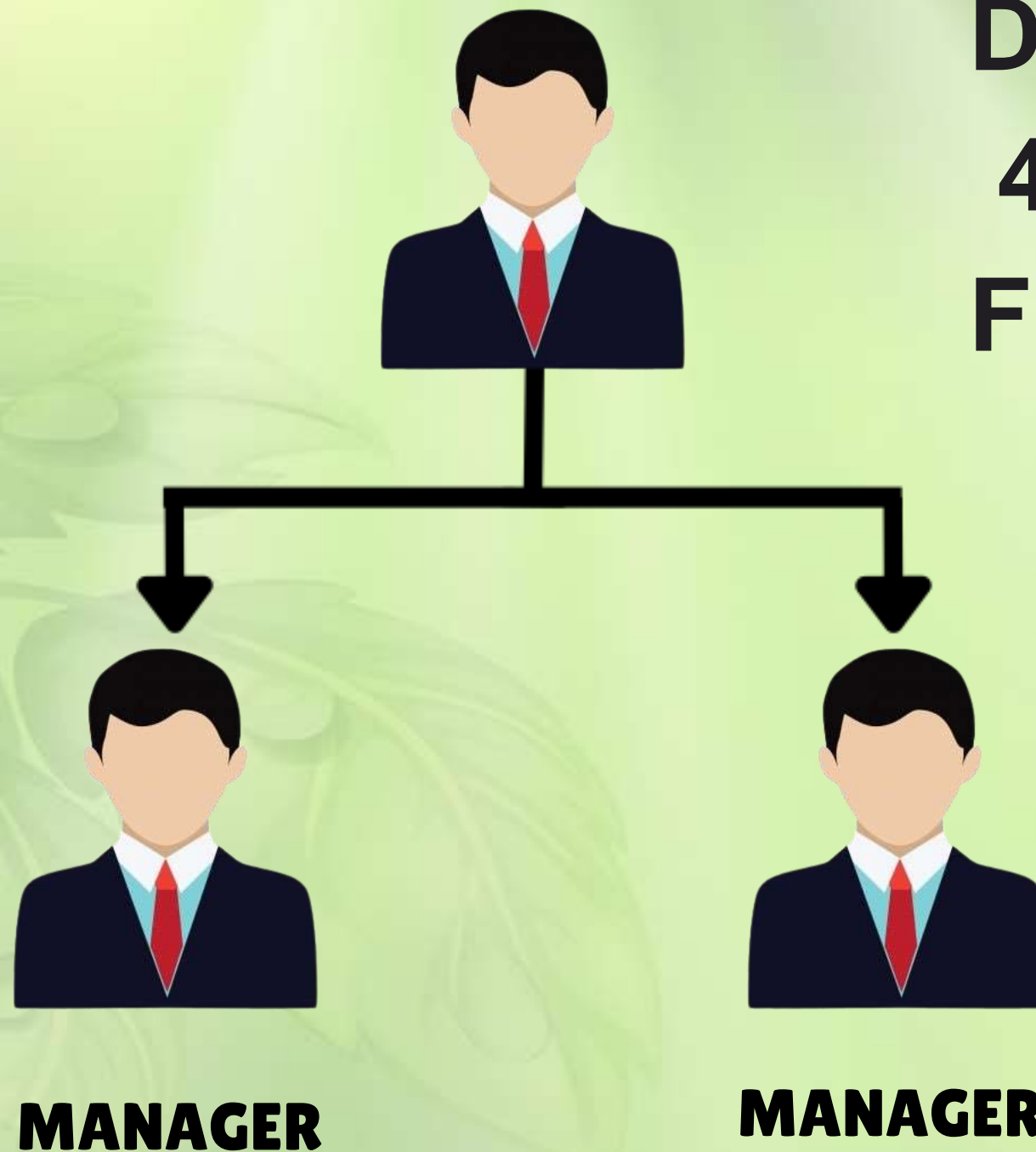
Become a partner and enjoy
exclusive discounts
(10% to 25%)
on products.

Unlimited Repurchase Income

Rank	B.V.	Income(%)
User	1000P.V.	5
Associate	6000 P.V.	10
Star Associate	15000 P.V.	15
Super Star Associate	30000 P.V.	20
Executive	60000 P.V.	25
Senior Executive	2 Lac P.V.	30
Sales Manager	5 Lac P.V.	40
Manager	10 Lac P.V.	50

Unlimited Repurchase Income

**DIAMOND 55% +
4% TEAM DEVELOPMENT
FUND +4% Travel Fund**



***Note : You Must Have Minimum Monthly Business Volume Of 25,000 To Avail Team Development Fund .**

Unlimited Repurchase Income



**AMBASSADOR 60%
+ 3% CAR FUND**



DIAMOND



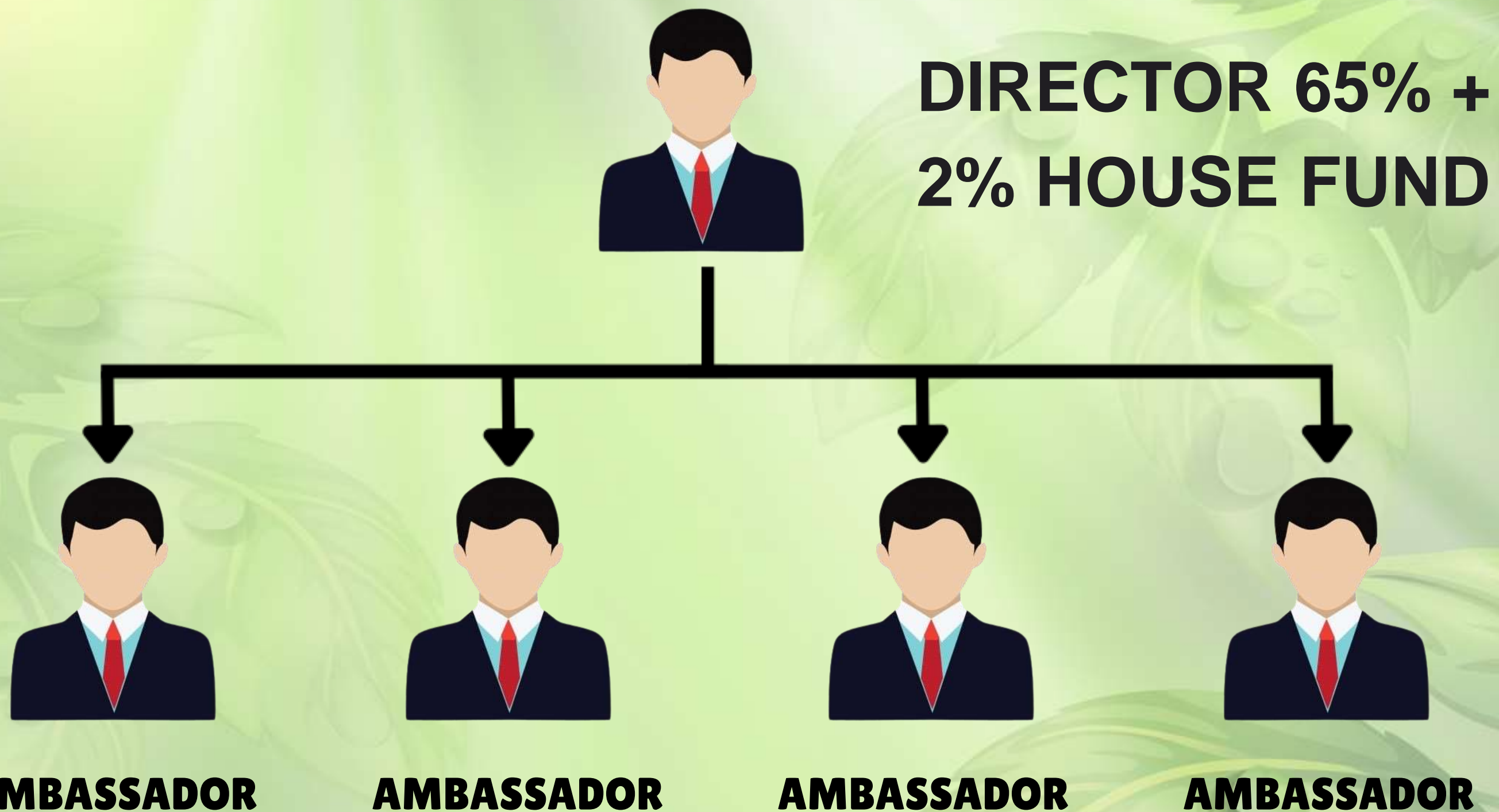
DIAMOND



DIAMOND

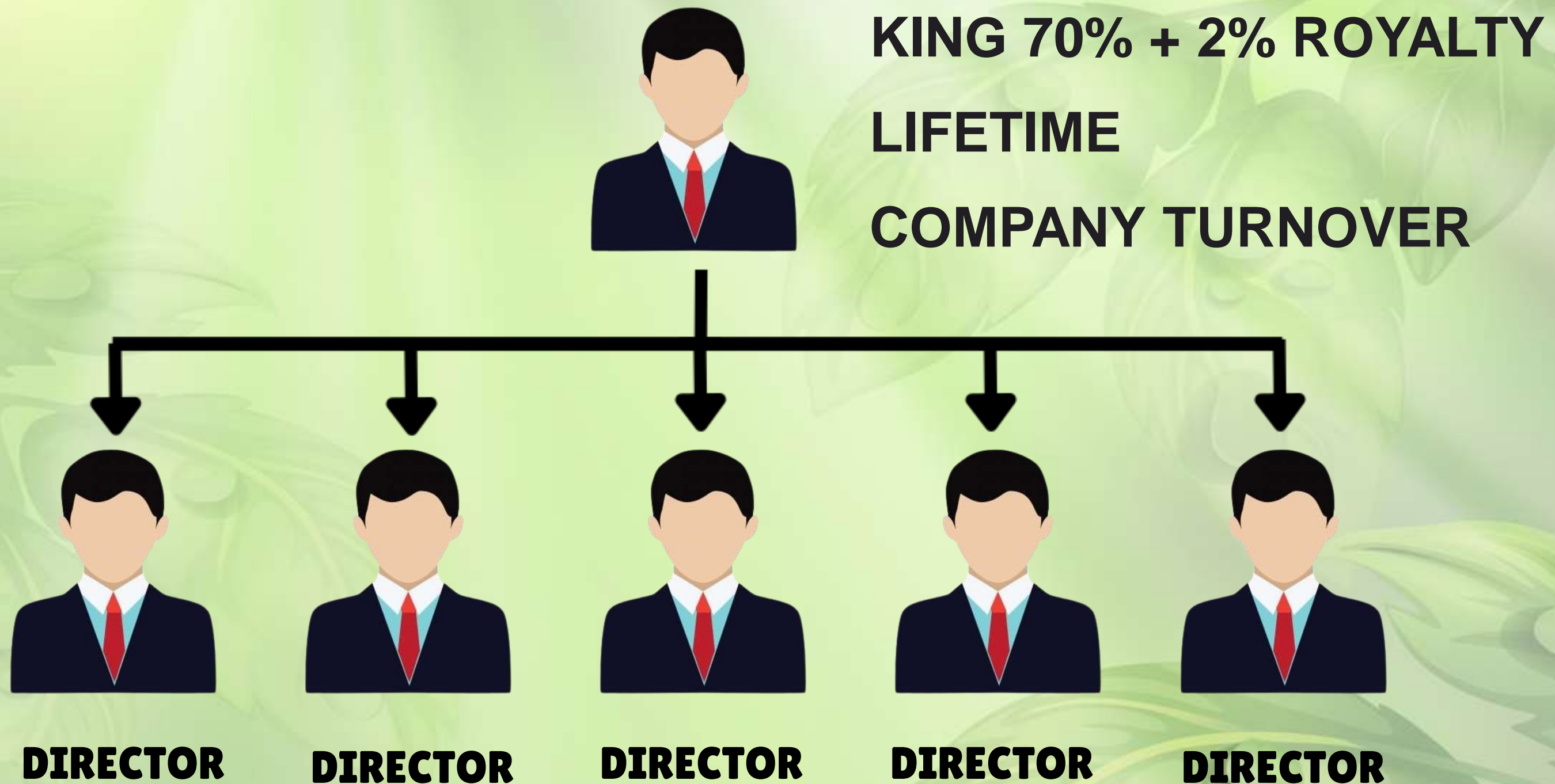
Note: You Must Have Minimum Monthly Business Volume Of 50,000 To Avail Car Fund

Unlimited Repurchase Income



Note : You Must Have Minimum Monthly Business Volume Of 75,000 To Avail House Fund

Unlimited Repurchase Income



Note : You Must Have Minimum Monthly Business Volume Of 1,00,000 To Avail Royalty Lifetime Company Turnover Fund

Our Stock Point



Stock Pint	Amount	Percentage	MG	Months
P.S.P.	50000	3%	2500/-	60
H.S.P.	150000	5%	8000/-	60
S.S.P.	500000	7%	25000/-	60
D.S.P.	1500000	10%	80000/-	60

Stock Point Passive Income

STOCK POINT PASSIVE INCOME =

M.G. 10% X 60 MONTHS



Terms & conditions

- ✓ **Matching Income closing on daily basis.**
- ✓ **Repurchase closing will be weekly basis.**
- ✓ **TDS as per Govt. Law will be applicable.**
- ✓ **Minimum Payout 500 Rs and multiple of 500 Rs.**
- ✓ **5% processing charge will be deduct from total income.**
- ✓ **Courier charge will be extra.**
- ✓ **After reaching the capping limit you can upgrade your ID with same package or higer package.**





THANKS!

Any questions?

enquiry@sirgindia.com

www.sirgindia.com